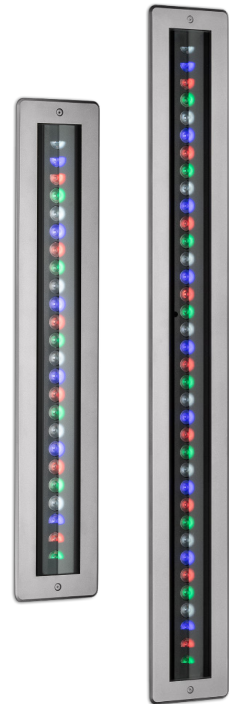


DESCRIPTION

PARADE L recessed linear luminaires are available in two or three foot lengths. Each model features premium quality high-brightness LEDs and a comprehensive selection of eight light distributions. Standard built-in programming capabilities include standalone or master-satellite configurations without the use of external control systems, or operation by remote DMX512 control systems. Recessed housing, trim, and hardware are stainless steel.



Date: _____ Type: _____ Catalog Number: _____

Project Name: _____

ORDERING INFORMATION

LUMINAIRE						
MODEL	CCT	CONTROL	CABLE	VOLTAGE	OPTIC	OPTION
PDL2R Parade L2 Recessed- 2' Length	RGBW30K RGBW (3000K White)	DMX-RDM DMX-RDM	M Monocable only (19.7")	UNV 120-277v	SP Spot 8°	LVR Honeycomb Louver
PDL3R Parade L3 Recessed- 3' Length	RGBW40K RGBW (4000K White)				NB Narrow 10°	
PDL2RPE Parade L2 Recessed Polar Edition- 2' Length					MB Medium 26°	
PDL3RPE Parade L3 Recessed Polar Edition- 3' Length					WB Wide 40°	
					EW Extra Wide 58°	
					ELH Elliptical 42° x 11°	
					ELWH Elliptical Wide 40° x 24°	
					WW Wall Wash 36° x 15° (5° Incline)	

Custom options are available; consult factory for assistance via phone at (864) 487-3535 ext. 258 or via email at DesignServices@EXP-Brands.com.

See Page 4 for ordering information of available and required accessories.



		PARADE L2 RECESSED	PARADE L3 RECESSED
PHYSICAL	HOUSING	Extruded Aluminum	
	LENS	Tempered Glass	
	DRIVER LOCATION	Integral	
	DIMENSIONS (LUMINAIRE + BACK BOX)	26 ¾" L x 5 ⅝" W x 4 ⅝" H	38 ¾" L x 5 ⅝" W x 4 ⅝" H
	WEIGHT	15.2 Pounds	21 Pounds
	OPERATING TEMPERATURE	-40°F to 122°F (-40°C to 50°C)	

ELECTRICAL	INPUT VOLTAGE	Universal 120 to 277 Volts	
	POWER CONSUMPTION	38 Watts	58 Watts
	CURRENT	0.32 Amps at 120 Volts 0.14 Amps at 277 Volts	0.48 Amps at 120 Volts 0.21 Amps at 277 Volts
	CONTROL	Integrated DMX-RDM Control System	
	CONNECTION KIT	GRIVEN-CON-KIT-8287	

PHOTOMETRIC	LED	RGBW (3000K or 4000K White)
	LUMEN MAINTENANCE	L80 > 70,000 Hours at 77°F*
	CRI	80 or 90 CRI

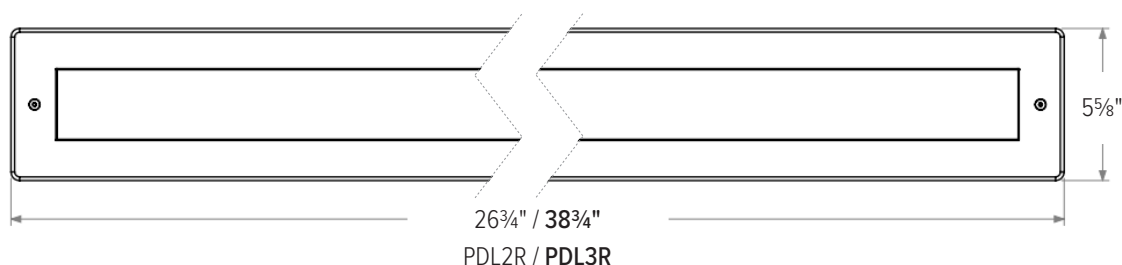
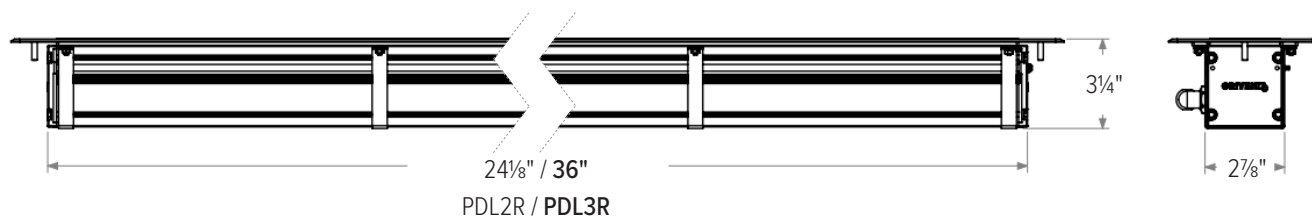
			PARADE L2 RECESSED		PARADE L3 RECESSED					
LIGHT DISTRIBUTIONS	DISTRIBUTION	BEAM ANGLE	RGBW 3000K		RGBW 4000K		RGBW 3000K		RGBW 4000K	
			LUMENS	EFFICACY	LUMENS	EFFICACY	LUMENS	EFFICACY	LUMENS	EFFICACY
	SPOT	8°	2024	53	2086	55	2462	42	2538	44
	NARROW	10°	1945	51	2005	53	2375	41	2448	42
	MEDIUM	26°	1952	51	2011	53	2383	41	2457	42
	WIDE	40°	1756	46	1809	48	2144	37	2210	38
	EXTRA-WIDE	58°	1374	36	1416	37	1677	29	1729	30
	ELLIPTICAL	42° X 11°	1822	48	1878	49	2224	38	2293	40
	ELLIPTICAL WIDE	40° X 24°	1676	44	1728	45	2047	35	2110	36
	WALL WASH	36° X 15° (5° INCLINE)	1761	46	1814	48	2150	37	2216	38

CERTIFICATIONS	SAFETY	ETL Certified for Wet Locations
	INGRESS PROTECTION	IP67
	IMPACT RATING	IK10
	WARRANTY	Five Year Limited Warranty

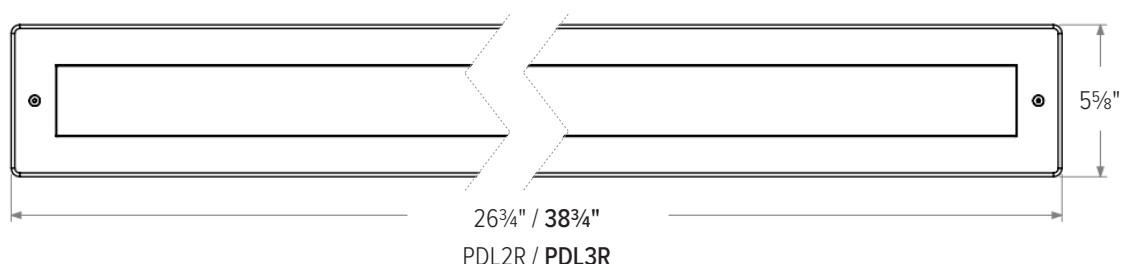
DIMENSIONS

All dimensions are shown in inches unless otherwise noted.

Luminaire Dimensions



Luminaire Dimensions with Recessed Back Box



CUSTOMIZE YOUR **EX**PERIENCE.

At Experience Brands, we believe every space deserves unique lighting elements. We proudly specialize in crafting solutions that reflect your personal vision. Our expert team is here to collaborate with you to design and implement customized features that elevate your environment.

Ready to Get Started? Email us at: DesignServices@exp-brands.com

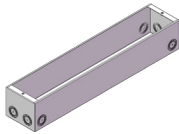
ACCESSORIES

NOTE: Accessories are ordered and shipped separately from luminaire for field installation.



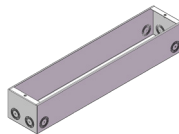
IR-CONFIG-REMOTE

Infrared DMX Configuration Remote



PDL2R-RBB

Parade L2 Recessed Back Box



PDL3R-RBB

Parade L3 Recessed Back Box



GRIVEN-CON-KIT-8287

Connection Kit for "M" Cable Type

Additional Control and Installation Solutions are available online; click here to view available options.

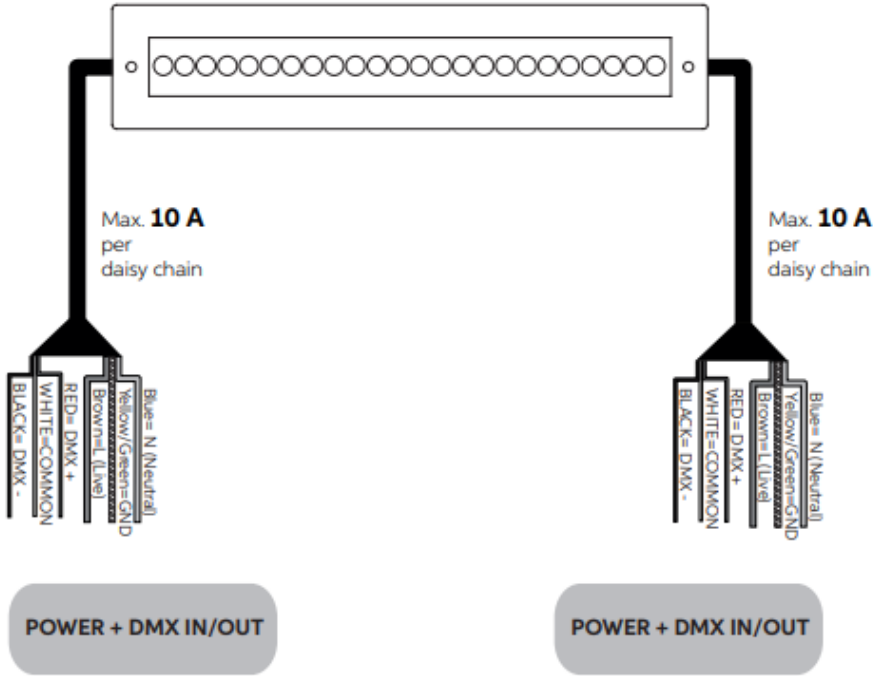
ORDERING INFORMATION

UNPAINTED ACCESSORIES

MODEL
IR-CONFIG-REMOTE Infrared DMX Configuration Remote ¹
PDLR2-RBB Parade L2 Recessed Back Box
PDLR3-RBB Parade L3 Recessed Back Box
GRIVEN-CON-KIT-8287 Connection Kit for "M" Cable

¹Unless an RDM compatible control is used, one IR-CONFIG-REMOTE must always be purchased with one or more DMX/RDM luminaires in order to access DMX addressing.

CONNECTIONS



INSTALLATION

